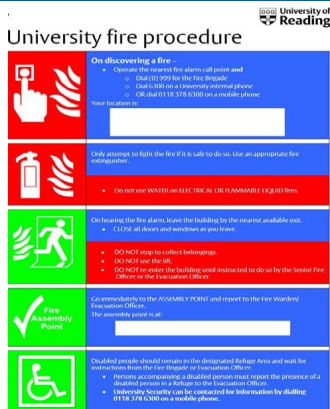


# Fire procedures

Make sure you know what to do

**Fire action posters**

When you are in a building, familiarise yourself with the information on the building Fire Action Notice. These will be located adjacent to fire alarm break glass call points.



Fire Action Notice

## Fire alarms

- This building has a fire alarm system that incorporates automatic fire detection.
- A red break glass fire alarm call point is located at every staircase or external exit door.
- If you discover a fire and the fire alarm is not yet sounding, then raise the alarm by pressing the red break glass call point.
- The sound will be a siren.
- Visual warning signals may also be provided such as a strobe light or a sounder beacon.
- A Deaf Alerter system is installed for staff and student who may have been issued a pager as part of their PEEP process.



Fire alarm call point



Deaf Alerter sign



Green emergency door release



Fire exit sign and wheelchair-friendly fire exit route sign

## Fire exits

- On hearing or seeing the fire alarm sounding make your way to the nearest available safe exit route and leave the building without delay.
- Swipe access doors on escape routes will automatically release on the activation of the fire alarm.
- A green break glass call point is located next to the swipe access door. Should the door not release press the middle of the green break glass call point and the door will release.



Fire assembly point sign

## Fire assembly point

- Make your way to the designated fire assembly point. This will be identified in the building fire action notice.
- Do not re-enter the building.
- Wait at the assembly point until you are informed by the Evacuation Officer or University Security that it is safe to return to the building.

### General fire safety information or advice

University Fire Safety Adviser  
0118 378 8282  
[firesafety@reading.ac.uk](mailto:firesafety@reading.ac.uk)

**Please contact the University Fire Safety Advisor, school disability representative, if you need:**

- assistance to familiarise yourself with the evacuation routes within a University building.
- Further information about the fire safety arrangements for a particular building.

**Additional information** Visit [Fire Safety](#) pages or scan the QR code

