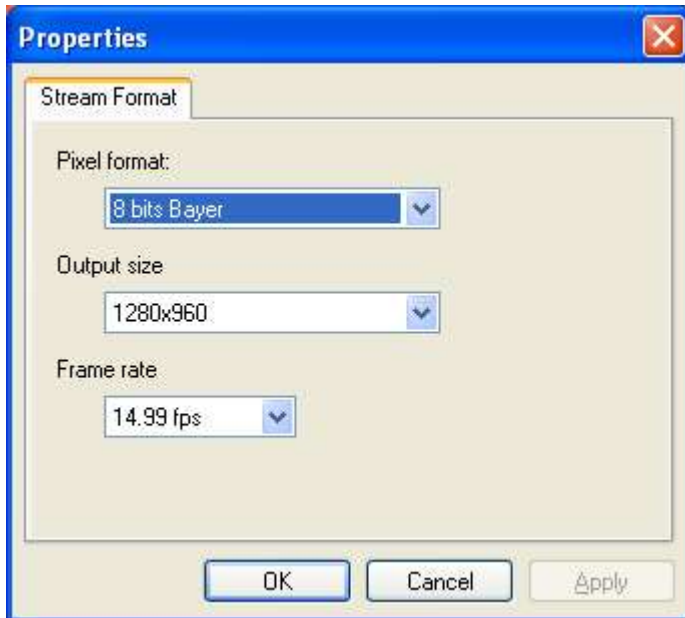


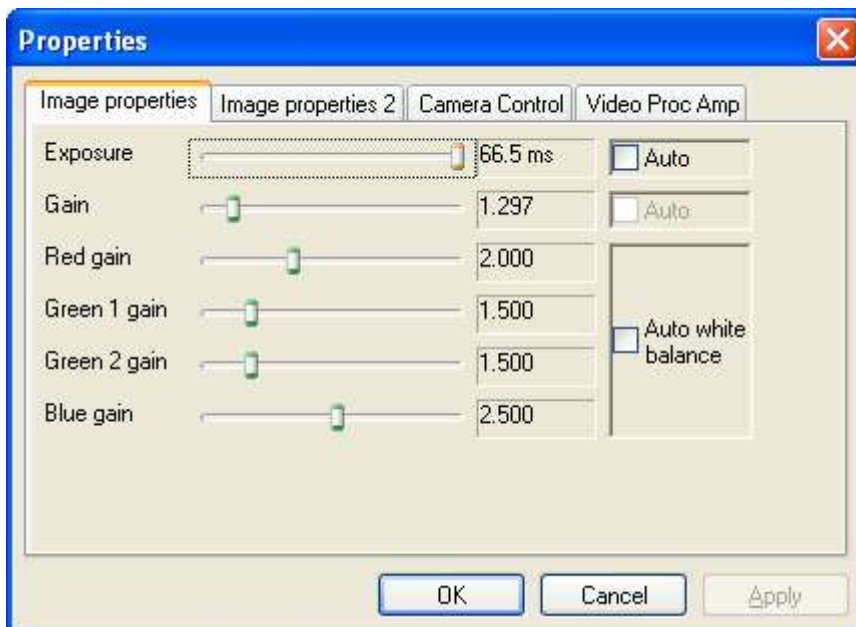
VIDEO INFORMATION (configured with the HSM).

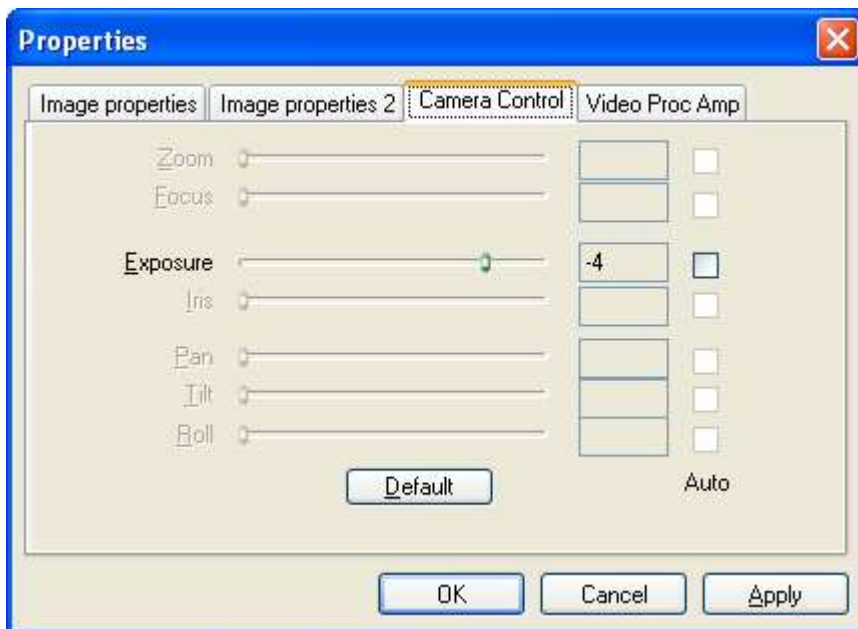
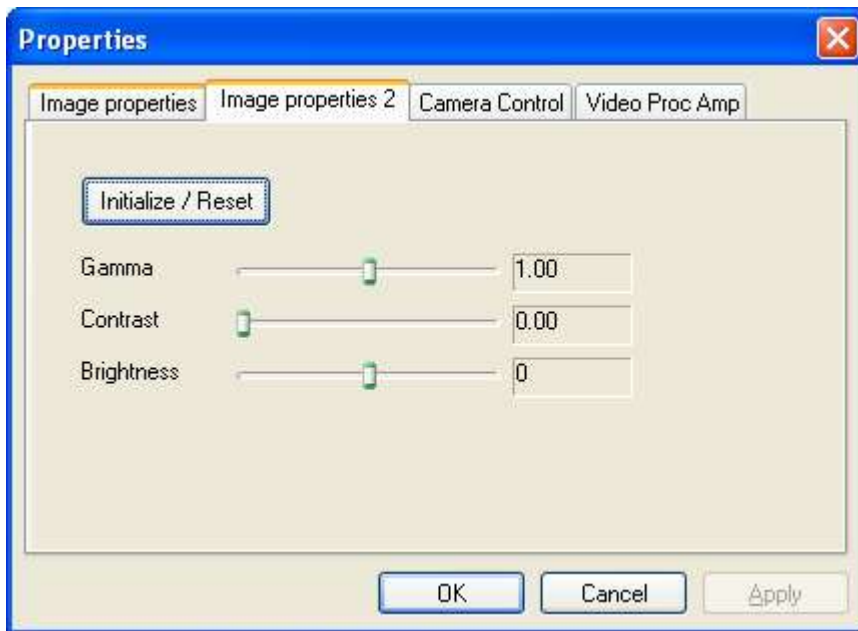
Pedro CAF. 22/02/2020

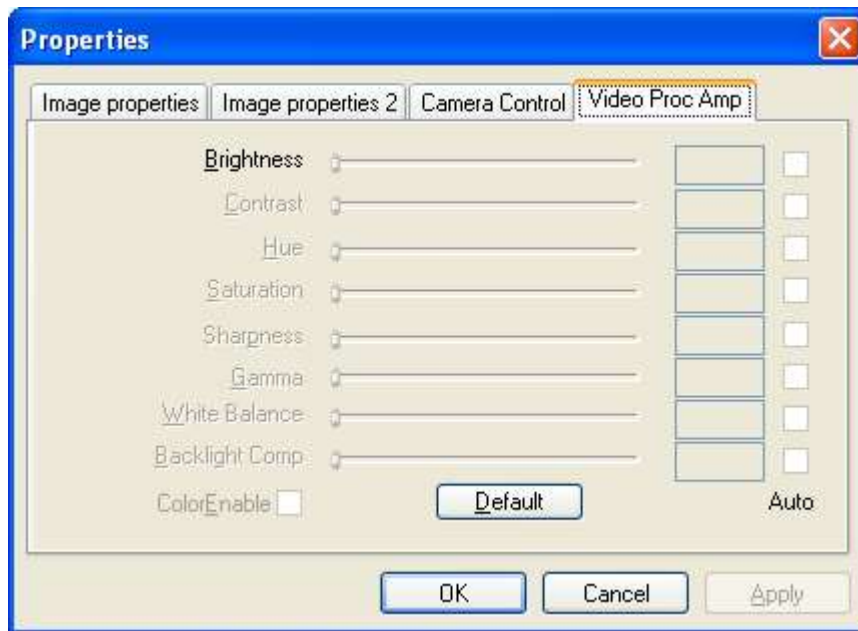
Output size: if you choose a smaller one you can't see the whole area (you see less than with the current one), the next one seems the best, but you do not see the total area either.



Video Settings.

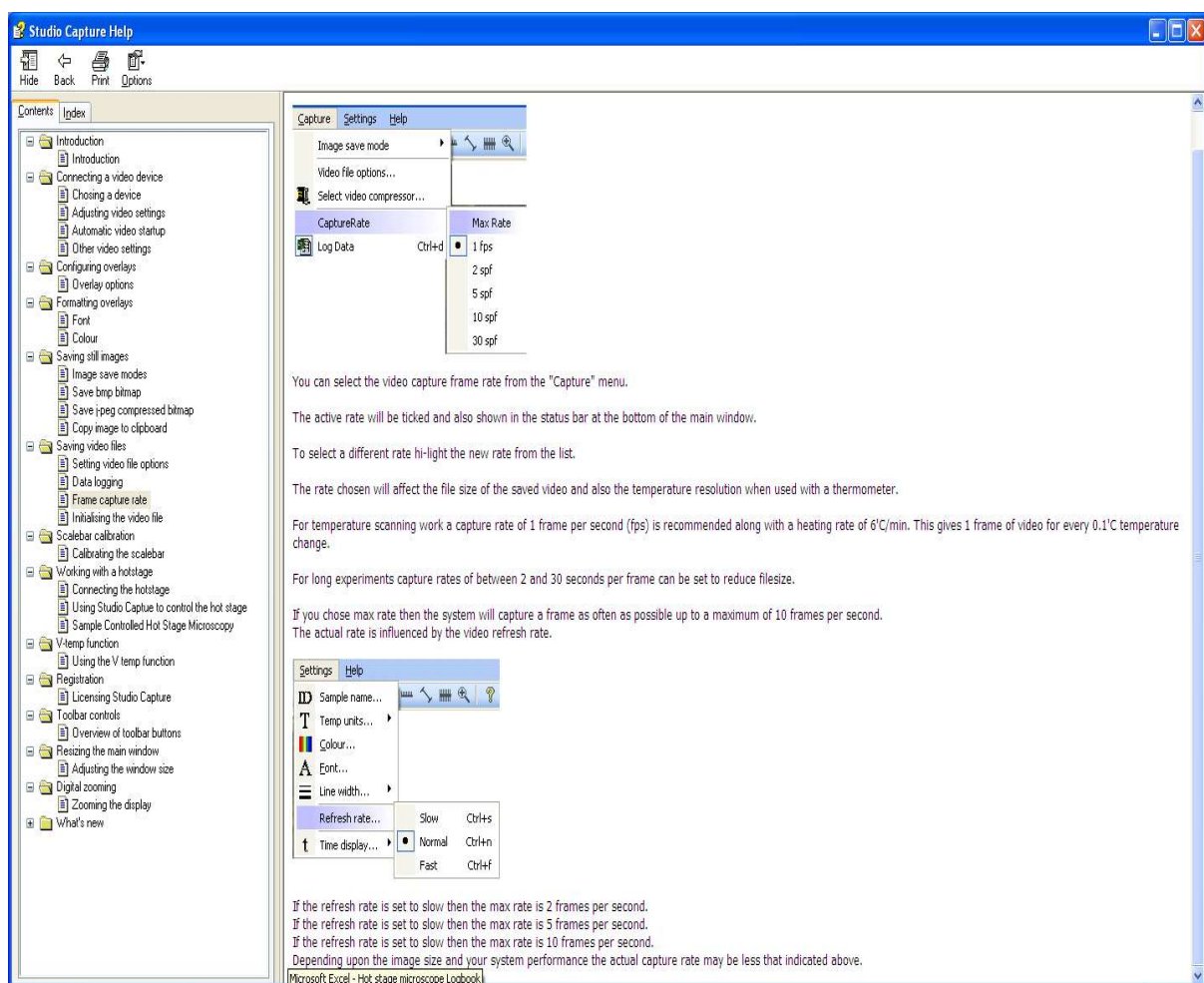






***Capture rate:** will affect the size

From the help menu.



30spf 22/02/20 change: According to the help menu described below, a new rate of 1 spf (every second 1 frame) is selected. This increases the file size but it gives better video-temperature resolution. I have checked that this 1spf does not give a video of the real/total length time of the experiment, but it is much longer than the 30spf selected before. Example: for 3h experiment (including isothermal) you get a video of 10 minutes, with the other frame you would have got only 38 seconds (16 times less).

Capture frame rate

You can select the video capture frame rate from the "Capture" menu.

The active rate will be ticked and also shown in the status bar at the bottom of the main window.

To select a different rate hi-light the new rate from the list.

The rate chosen will affect the file size of the saved video and also the temperature resolution when used with a thermometer.

For temperature scanning work a capture rate of 1 frame per second (fps) is recommended along with a heating rate of 6°C/min. This gives 1 frame of video for every 0.1°C temperature change.

For **long experiments capture rates of between 2 and 30 seconds per frame can be set** to reduce filesize.

If you chose max rate then the system will capture a frame as often as possible up to a maximum of 10 frames per second.

The actual rate is influenced by the video refresh rate.

If the refresh rate is set to slow then the max rate is 2 frames per second.
If the refresh rate is set to slow then the max rate is 5 frames per second.
If the refresh rate is set to slow then the max rate is 10 frames per second.
Depending upon the image size and your system performance the actual capture rate may be less than indicated above.

***Image save mode single file**

