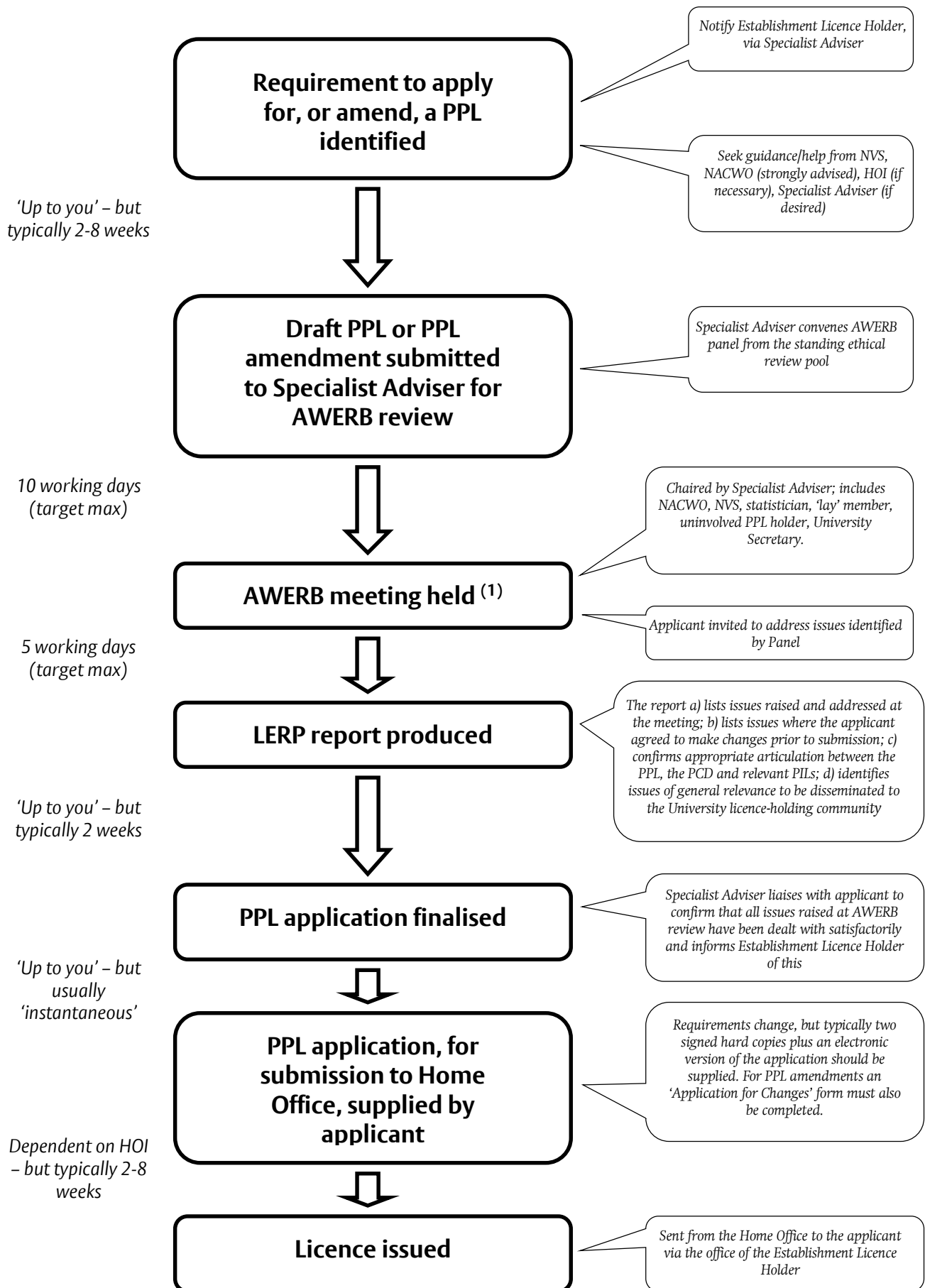


Animal Welfare and Ethical Review Body (AWERB) process



Footnotes

- (1) For all applications for new PPLs, the AWERB review panel will meet in person for its deliberations. Applications for amendment to existing PPLs may be considered in a 'fast-track' manner, following email correspondence amongst the members of a AWERB panel appointed by the Specialist Adviser. Suitability of applications for expedited AWERB will be determined on a case-by-case basis, initially by agreement between the Specialist Adviser and the Establishment Licence Holder. Subsequently, if any one member of the appointed panel believes that the group should, instead, meet, the Specialist Adviser will convene such a meeting. It is not possible to give an exhaustive list of the circumstances when the 'fast-track' approach will be considered appropriate, but the following examples are illustrative:
- Minor changes to wording made for the purposes of clarification, amplification or disambiguation - or at the request of the HOI.
 - Minor changes to project personnel
 - Minor changes to the licence's techniques - including the addition of new protocols - that remain firmly within the original aims and objectives